

2019
1/8th IC Track
World Championships



9300 Cherry Ave
Fontana, CA 92335
United States

Located inside:



Website:

www.steelcityrcspeedway.com

Email:

info@steelcityrcspeedway.com

Facebook:

<https://www.facebook.com/steelcityrcspeedway/>

Contacts:

Kyle Goodwine

kyle@goodwineglass.com

909-740-9010

Phil Goodwine

phil@goodwineglass.com

909-762-6948

Proposed Dates:

Option 1- September 12th through September 22nd

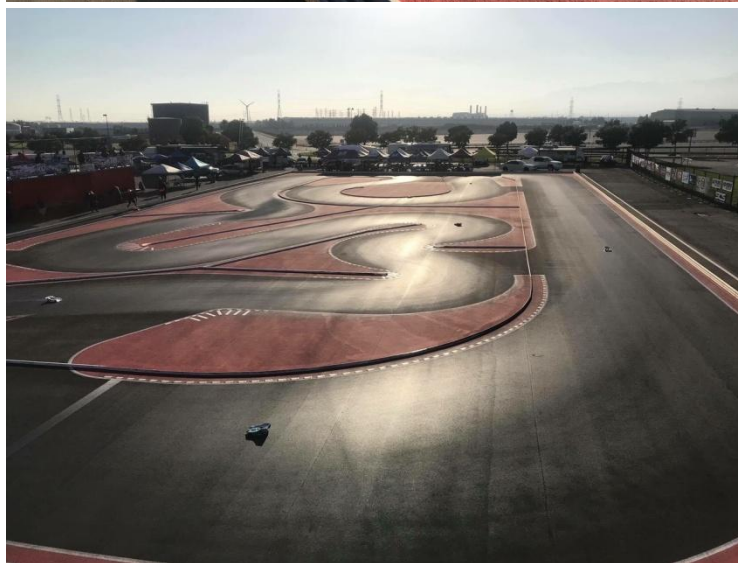
Option 2- October 24th through November 3rd (preferred)

A couple of notes regarding dates:

- Southern California is susceptible to Santa Ana winds during the fall and winter months. Gusts on average reach 30-50mph. Winds come from the North East direction.
- There is a large event taking place in multiple lots directly to the east of us September 24th – October 17th and October 20th. Our facility must be at minimal use during this time because of the nearby show.
- Any and all dates are subject to change up to 60 days prior to the start date of the race. This is a contractual agreement between Steel City R/C Speedway and Auto Club Speedway / ISC. Unfortunately, this is non-negotiable.

The Track:

- 250' x 125' overall surface size
- 330 meters of racing line
- 13 right and left hand varying diameter corners
- 20' wide straightaway and sweeper lanes (paint to paint)
- 16' wide infield lanes (paint to paint)
- Freshly laid fine grit asphalt
- Red painted infield areas
- Raised rumble strips
- Metal perimeter and infield divider boards
- Protected infield turn marshals
- Fast lap time / track record is 15.0 seconds





Drivers Stand:

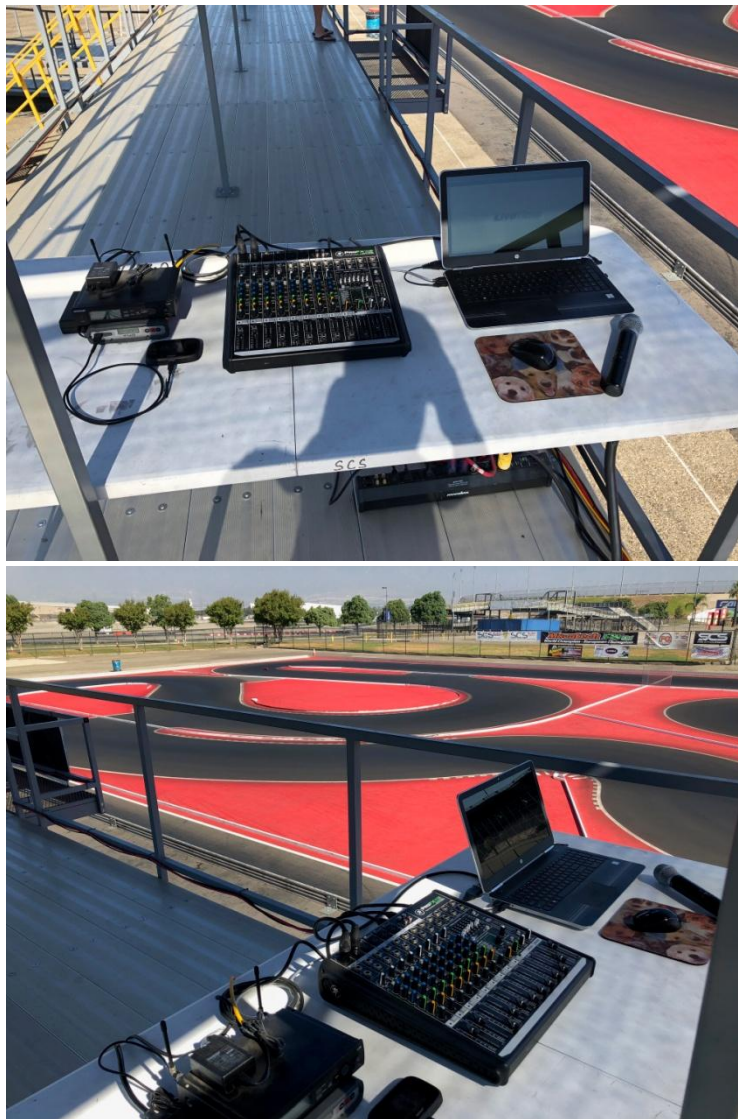
- 48' long x 10' tall x 8' deep
- Fully shaded and covered
- Aluminum decking and steel hand rails
- Stairs and handicap friendly ramp
- Center bridge / tunnel
- 36 linear feet of pit road work benches





Timing and Scoring:

- Sits on top of drivers stand
- Mylaps RC4 decoder box with newest firmware (no AMB, MRT or clone transponders will work)
- Livetime scoring program
- Wireless microphone
- Not climate controlled
- 2nd redundant loop and decoder box will be added by race time



Pit Areas:

- Temporary canopies, tables and chairs
- (1) 72" x 30" table and (1) chair provided per entry
- 120v A/C power
- Racers will need to bring short extension cords and power strips

**Other Onsite Amenities:**

- 12v tire truing station
- Portable restrooms / outhouses
- Onsite snack bar serving hot food, drinks, and ice cream
- Fully paved pit and parking areas (no dirt!)
- Overnight RV parking available upon request
- Alcohol may be consumed once racing has been completed and the track is closed each day
- Use of any drugs / narcotics is strictly prohibited at all times (including marijuana)
- Designated smoking areas will be provided

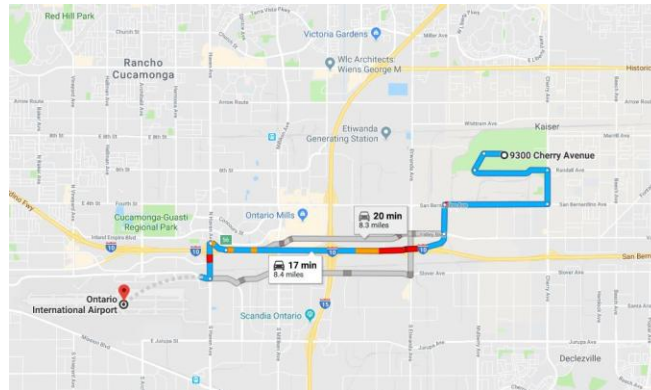




Nearby Airports and Hotels:

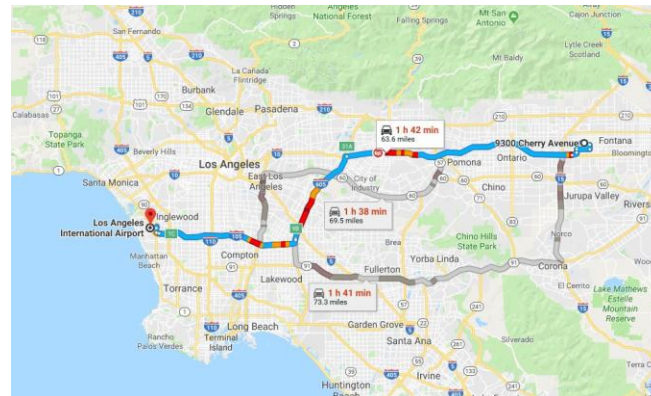
- Ontario International Airport (ONT)

2500 E. Airport Dr.
Ontario, CA 91761
9 miles away



- Los Angeles International Airport (LAX)

1 World Way
Los Angeles, CA 90045
70 miles away



- The surrounding areas have lodging accommodations for most price ranges

Hilton Garden Inn
10543 Sierra Ave
Fontana, CA 92337
Approx \$140 per night
5.2 miles away



Hyatt Place
4760 Mills Circle
Ontario, CA 91764
Approx \$130 per night
4.5 miles away

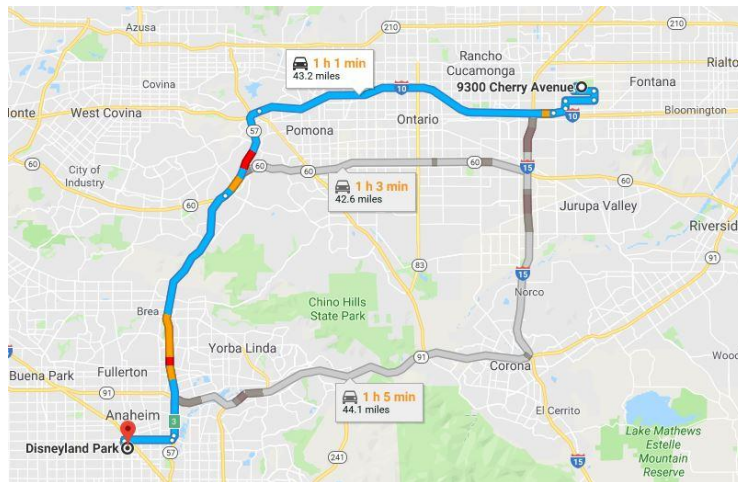


Rodeway Inn
4075 E Guasti Rd
Ontario, CA 91761
Approx \$70 per night
5.8 miles away



Nearby Activities:

- Cal Speed Karting
 - Kart rentals (starting at \$35)
 - Located on Auto Club Speedway property
 - www.calspeedkarting.com
- Exotic Racing Los Angeles
 - Exotic car rentals (starting at \$300)
 - Located on Auto Club Speedway property
 - www.exoticracing.com
- Disneyland (45 miles)



- Hollywood (60 miles)

